

SHOCKWAVE

MARINE SUSPENSION SEATING

S5

FEEL BETTER. TRAVEL FARTHER.



SHOCKWAVE

MARINE SUSPENSION SEATING

WHO IS SHOCKWAVE?

We are a marine suspension company revolutionizing marine safety around the globe. We design, develop and manufacture our products in Canada using military grade materials to ensure that our clients – their families and the people who put trust in them – get home safely.

Since 2001, we have been designing marine suspension solutions to provide increased impact protection on the water. Our focus is on safety, comfort and accessibility, and we work with leading military and safety organizations to customize marine suspension solutions for their specific use.

Being based on the North Pacific Ocean provides us the opportunity to do real-world testing in some of the most severe conditions on the planet – and we test constantly, putting our products through rigorous assessments that far exceed industry standards.

SHOCKWAVE Marine Suspension Seating is changing the way people think about marine safety and suspension, from recreational boaters to the US Navy SEALs, we develop the best suspension modules on the planet. The **SHOCKWAVE S5** brings our standard of safety to the recreational market.

DEALER FINDER - [SHOCKWAVESEATS.COM/DEALERS](https://shockwaveSeats.com/dealers)



SHOCKWAVE S5

INTRODUCTION TO THE SHOCKWAVE S5

The **SHOCKWAVE S5** is an affordable marine suspension module that can be installed in virtually any boat, immediately transforming it into a smoother, safer and more comfortable ride. The S5 has arrived to revolutionize the recreational boating market. Once installed, your boat will be transformed into an experience like you've never had.

- Can Be Installed in Virtually Any Boat
- Pairs with Almost Any Seat
- Genuine Comfort with Shock Absorber and Military-Grade Components

TO LEARN MORE ABOUT HOW SHOCKWAVE S5 CAN INCREASE YOUR SAFETY, VISIT SHOCKWAVESEATS.COM/S5

SHOCKWAVE S5

| BENEFITS

FEEL BETTER.

- Protects Boaters from the Shock of Wave or Wake Impact
- Genuine Comfort with Corbin2 Seat, FOX Shocks and Military-Grade Components
- Provides Confidence On the Water, Allowing Boaters to Stay Out Longer

TRAVEL FARTHER.

- Longer Days on the Water with Less Impact on the Body
- Allows Boaters to Travel to Farther Destinations with Little Physical Fatigue
- Extends the Long-Term Health of Boaters

SALES +1.778.426.8545





SHOCKWAVE **S5**

FEATURES

CONSTRUCTION

- Simple Robust Construction with Minimal Parts Count
- Lightweight (20 lbs)
- High-Pressure Die-Cast Aluminum Components
- 316 Stainless Steel Hardware
- High Life Cycle Delrin Bushings
- Military Spec Powdercoat Finish
- Plates Pre-Drilled and Positioned to Fit Virtually Any Boat or Seat

SUSPENSION

- Fully Adjustable RockShox Shock Absorber for All Payloads and Sea Conditions
- External Bump Stop Protection
- Surge Protection: Suspension Travel is 4-inch Vertical and 1.5-inch Forward
- Adjustable Rebound Rate

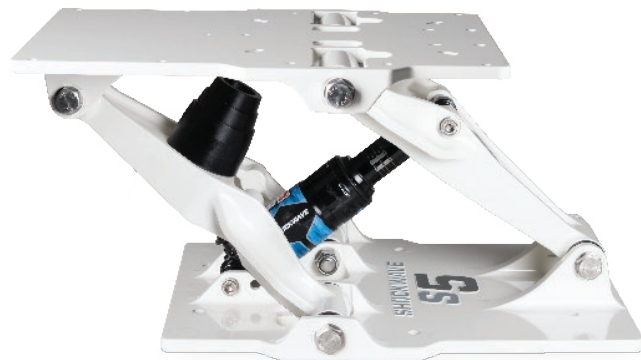
LEARN MORE ABOUT OUR CUSTOMER'S S5 EXPERIENCES BY VISITING [SHOCKWAVESEATS.COM/S5](https://shockwaveSeats.com/S5)

SHOCKWAVE | **PRODUCT** **S5** **LINEUP**

The **SHOCKWAVE S5** comes in a matte black or glossy white finish. It is easily and quickly installed in virtually any boat and can be mounted on a riser box or pedestal with minimal effort.



S5 SUSPENSION MODULE - BLACK
SW-05026



S5 SUSPENSION MODULE - WHITE
SW-05026-BW

Designed to pair perfectly with the **SHOCKWAVE S5**, the Corbin2 is a lightweight, robust seat that comes equipped with folding armrests, a storage pocket, machined aluminum seat frames and fiberglass seat backs. These seats will outlast any marine seat on the market.



CORBIN2 SEAT BLACK
SW-04920-B



**CORBIN2
SEAT WHITE**
SW-04920-W



**CORBIN2
SEAT TAN**
SW-04920-T



**CORBIN2
SEAT HEAVY-DUTY**
SW-04920-HD

The **SHOCKWAVE S5** Jockey offers an integrated seat frame to minimize size and weight. It comes with a closed cell foam cushion, heavy-duty fabric called 'Grabber', designed for comfort and durability in extreme outdoor conditions. One of our most compact solutions.



S5 JOCKEY
SW-S5-2400

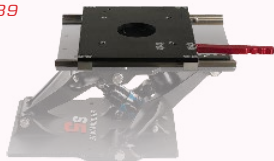
SEE THE SHOCKWAVE S5 PRODUCT LINEUP AND ACCESSORIES BY VISITING [SHOCKWAVESEATS.COM/S5](https://shockwaveSeats.com/S5)

SHOCKWAVE | **S5** **S5** **ACCESSORIES**

The **SHOCKWAVE S5** has a number of additional components that help provide custom marine suspension solutions. Slider and swivel mounts make the most of the space available, allowing for maximum access in a limited area. The shock pump and Corbin2 seats are fully compatible with the S5 and help bring marine suspension to the recreational market.

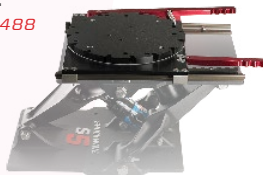
SLIDE

SW-05489



SWIVEL SLIDE

SW-05488



SHOCK PUMP

SW-01983



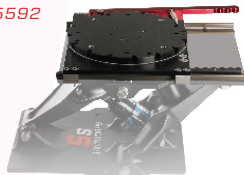
HEIGHT ADJUST

SW-05047



SWIVEL

SW-05592



LAPBELT

SW-04258



SALES +1.778.426.8545



SHOCKWAVE *Experiences* **TESTED AND REVIEWED**

QUALITY SUPPORT

Everyone at **SHOCKWAVE** Marine Suspension Seating is passionate about what we do, whether it's getting out on the ocean, manufacturing products, or providing exceptional customer service. We can help you troubleshoot through email or telephone, and we've created a series of How-To videos that can be accessed via our website that provide a visual explanation for everything to do with a **SHOCKWAVE S5**, from installation to changing shock pressure. Real humans helping real people.

LEARN MORE AND HEAR FROM OUR CUSTOMERS ONLINE AT [**SHOCKWAVESEATS.COM/S5**](https://shockwaveSeats.com/S5)

INTRODUCING S2 & S3

SHOCKWAVE has a broad product line for a range of applications and requirements. The **SHOCKWAVE S2** and **SHOCKWAVE S3** provide marine suspension seating for the professional market. With several different options, including helm, jockey or drop-down seats, each seat allows for multiple configurations depending on what is required by the vessel. Manufactured in Canada with military-grade materials, the seats are designed with function in mind and can be easily removed, stowed, locked or repositioned to suit mission profile.

FEATURES & APPLICATION

- Available in 6-inch and 8-inch Travel
- Robust and Durable Military-Grade Components
- Multiple Configurations and Options
- Ability to Match Customer Requirements

SHOCKWAVE S2 S3



TRAVEL
6"IN



TRAVEL
8"IN

TO SEE OUR COMPLETE LINE-UP OF MARINE SUSPENSION PRODUCTS, VISIT [SHOCKWAVESEATS.COM](https://shockwaveSeats.com)



TRAVEL
12"IN

SHOCKWAVE ICE

INTEGRATED
CONTROL
ENVIRONMENT

INTEGRATED CONTROL ENVIRONMENT

The **SHOCKWAVE ICE** (Integrated Control Environment) is a patented solution that suspends occupants, controls and electronics inside a single unit. Manufactured in Canada, the ICE is the only fully contained triple-axis marine suspension module on the market and is already in use with the Canadian Coast Guard, European Law Enforcement, the US Navy SEALs and several other elite marine organizations. Its triple-axis design provides protection from wave impact in all directions, protecting occupants and allowing them to travel at speed in extreme conditions.

FEATURES & APPLICATION

- Triple-Axis Suspension Provides Protection in All Directions
- Exceeds All Marine Safety Standards
- Record-Setting Journeys Through Northwest Passage
- Patented Design

SHOCKWAVE ICE units are designed and manufactured in Canada and can be customized to a range of specifications.

TO LEARN MORE ABOUT HOW SHOCKWAVE ICE CAN INCREASE YOUR SAFETY, VISIT SHOCKWAVESEATS.COM/ICE

SHOCKWAVE

MARINE SUSPENSION SEATING

**JOIN THE
SHOCKWAVE
COMMUNITY**

 **@SHOCKWAVESEATS**

 **@SHOCKWAVESEATS**

 **youtube.com/shockwaveSeats**

FIND A DEALER AND LEARN MORE
ABOUT OUR **S5** PRODUCTS ONLINE AT
SHOCKWAVESEATS.COM/S5

