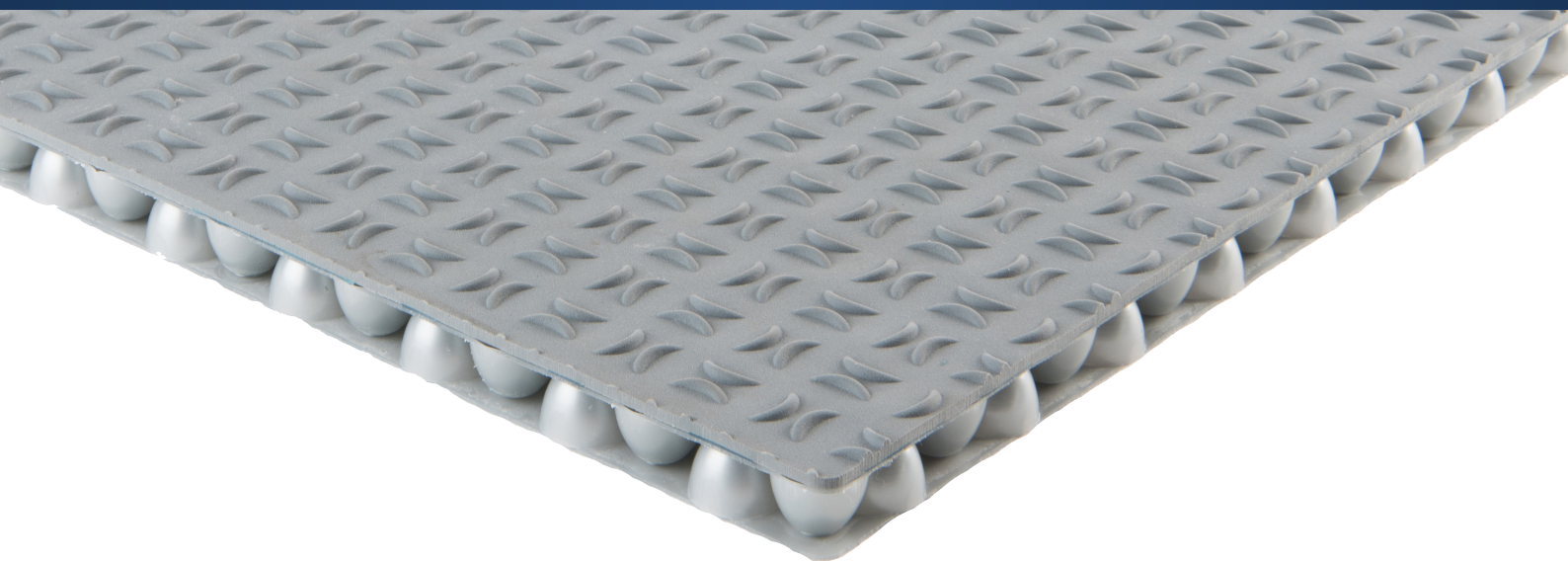




## IMPACT MITIGATING BOAT DECKING



**REDUCED  
VIBRATION**



**IMPACT  
MITIGATION**



**SUPERIOR  
TRACTION**



# IMPACT MITIGATING BOAT DECKING

## 3 TUNED DECKING SOLUTIONS FOR POWERBOATS • RHIBS • WORKBOATS

### PERFORMANCE Series

#### **P16** SKYDEX 16mm Decking

Lightweight • Slimmer profile • Delivers all round performance

### MAXIMUM Series

#### **M20** SKYDEX 18mm Decking

High Traction • Fits between deck tracks • High performance in all conditions

### EXTREME Series

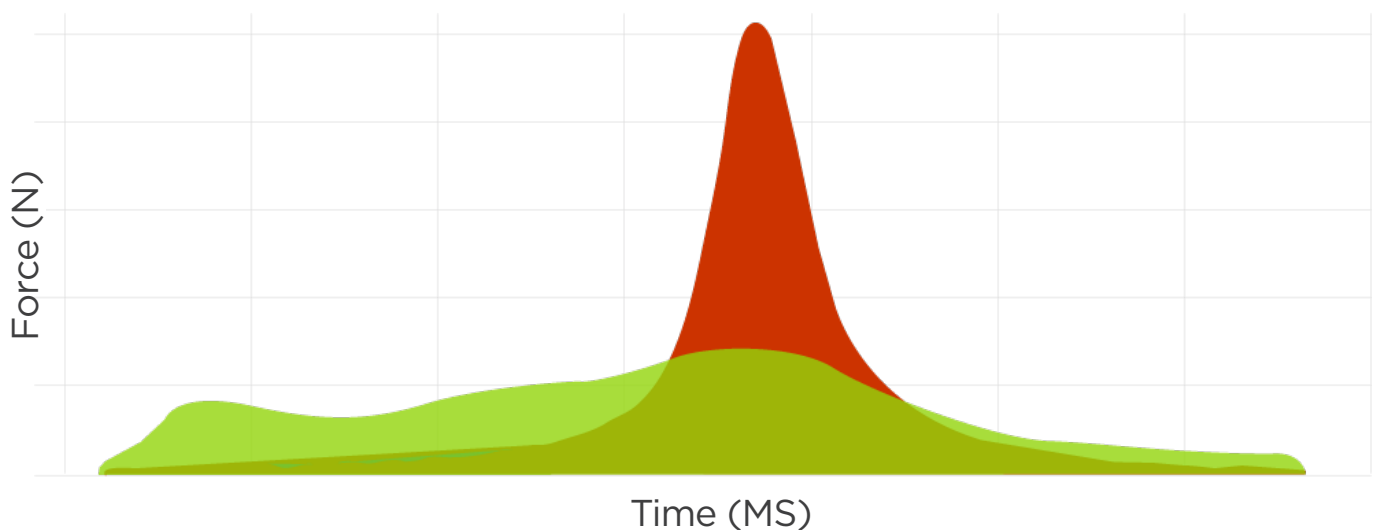
#### **X30** SKYDEX 32mm Decking

High Traction • Increased protection • Extreme application top surface

## Repetitive Shock and Whole Body Vibration

RS & WBV can affect the occupants of marine craft in waves

Standing on SKYDEX Impact Mitigating Boat Decking  
can reduce fatigue and increase comfort

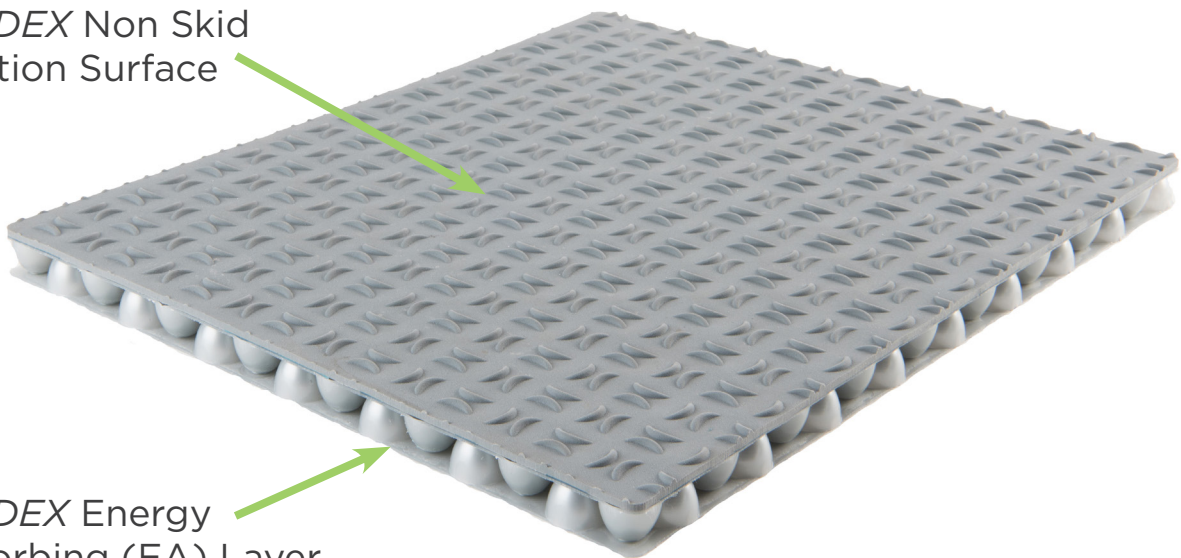


SKYDEX Boat Deck

1" foam with traction surface

SKYDEX Boat Decking is designed to mitigate the force of an impact by absorbing energy over a longer period of time compared to foam products

*SKYDEX* Non Skid  
Traction Surface



*SKYDEX* Energy  
Absorbing (EA) Layer

**SAFE**

*SKYDEX* decking is stable underfoot

**DURABLE**

Consistent performance and long life

**PROVEN**

Over 10 years in professional operations

**VERSATILE**

Can be used for new builds or retrofit projects

**COMPATIBLE**

Simply cut to size then fit between seats and consoles


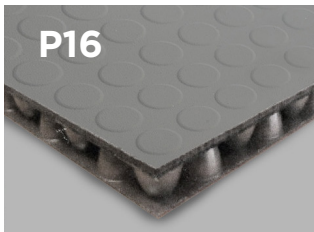
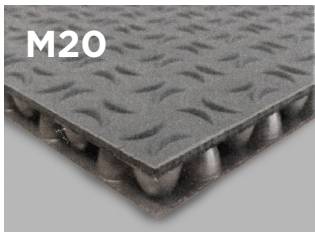
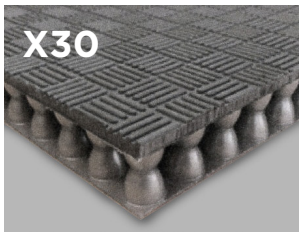
The objective of *SKYDEX* Impact Mitigating Boat Decking is to improve comfort and safety for crew and passengers on all types of fast craft and workboats.

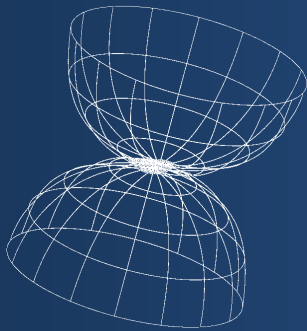
*SKYDEX* Decking can also protect casualties and equipment carried on the deck when exposed to vibration and impacts.

Occupants of 'feet on the deck' suspension seats have to use their leg muscles and a percentage of body weight is carried on the deck.

*SKYDEX* Decking provides grip and helps to reduce the effects of wave slams when standing or moving around the vessel.



			
<b>Depth</b>	16mm	18mm	32mm
<b>Weight</b>	4.4kg / m <sup>2</sup>	6.3kg / m <sup>2</sup>	9.3kg / m <sup>2</sup>
<b>Top Surface</b>	Coin Top - Grey	Crescent - Grey	X-Hatch - Grey
<b>60" x 90"</b> <b>1500 x 2250 mm</b>	No	Yes	Yes
<b>30" x 90"</b> <b>750 x 2250 mm</b>	Yes	Yes	No
<b>30" x 60"</b> <b>750 x 1500 mm</b>	Yes	Yes	No



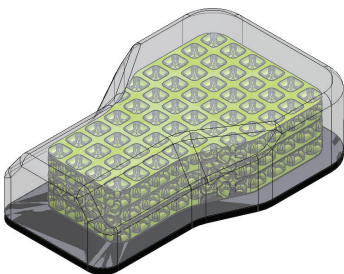
SKYDEX utilizes geometries and polymer structures for cushioning and impact absorption.

SKYDEX engineers its technologies to meet specific requirements for performance and durability.

SKYDEX technology is proven to excel in the most demanding conditions, from impact-absorbing components in bomb suits to high performance running shoes.

### MILITARY TESTED & PROVEN

SKYDEX decking is in over 24,000 military vehicles and 6,000 marine craft  
US Navy - Coast Guard - Riverine - Special Forces - Marine Corps - Army



### DECKING + SEATING = AN INTEGRATED SOLUTION

SKYDEX Impact Mitigating Seat Cushion Inserts are available in a range of tuned performance layers and thicknesses. Metrics demonstrate how cushions with SKYDEX Seat Inserts can reduce the effects of whole body vibration (WBV) within the existing seat footprint and with no weight gain.



**SKYDEX - UK & EU contact:**  
**Shock Mitigation Solutions**

**[www.shockmitigation.com](http://www.shockmitigation.com)**  
**[skydex@shockmitigation.com](mailto:skydex@shockmitigation.com)**